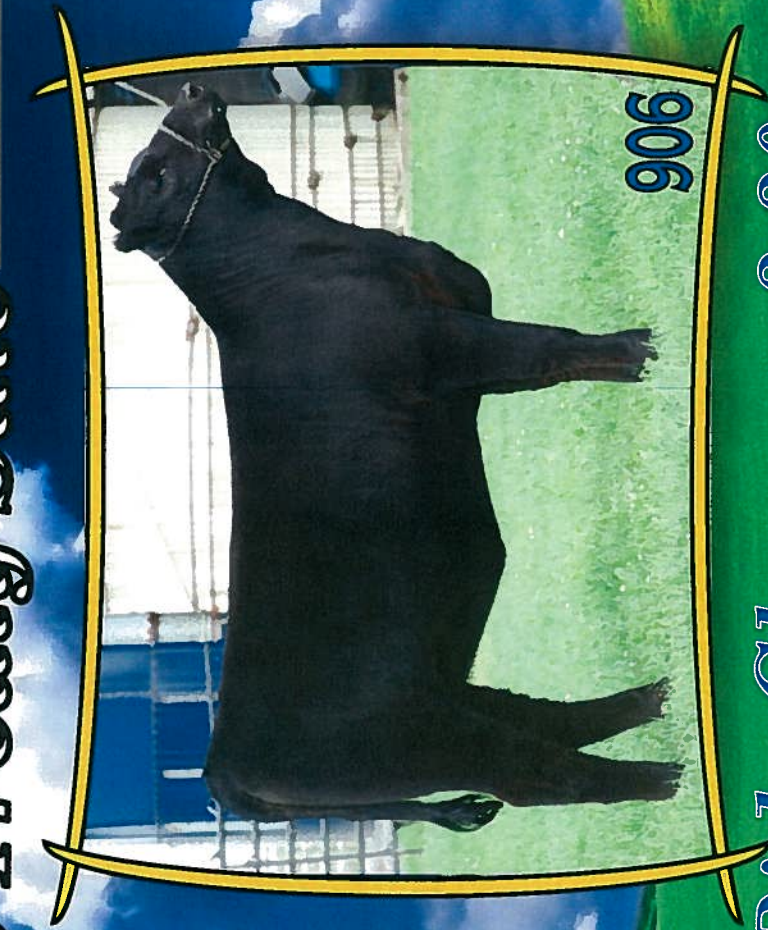


# Penn State University Angus Private Treaty Sale



972



906

*October 24, 2009 - Bids Close at 3:30*

**Selling Broke Show Heifer Prospects As Well As Several Exciting Bred Cows**

Penn State University  
Beef Cattle Center  
142 Orchard Rd.

University Park, PA 16802

Beef Cattle Center (814) 863-0831

Wendall Landis (814) 280-7611

Ken Reed (814) 280-7397



October 9, 2009

Dear Friends,

We would like to invite you to our private treaty Angus sale on October 24, 2009 held at the Penn State University Beef Cattle Center. We will be offering 11 halter broke heifer calves (Lots 1-11) and 8 bred cows (Lots 12-19). All the females offered for sale are AM/NH free. Breeding information on the cows is noted below the individuals EPD's. The service sires are all AM/NH free by pedigree and are the result of our embryo transplant program. Cattle will be available for viewing from Monday, October 19<sup>th</sup> through Saturday, Oct. 24. Bids can be placed starting Monday morning and will close at 3:30pm on Saturday.

We hope you will consider coming to 'Happy Valley' on Saturday to take advantage of two great sales in one day. The PSU private treaty sale females will be displayed at the Beef Cattle Center and the Block and Bridle 'Premier Prospect' Sale will be held at the Snider Ag Arena at 2:30pm.

The student employees at the Beef Cattle Center have been exceptionally dedicated to the preparation of the sale cattle. As in years past, we once again have a great group of students here at the barns that help make these events and opportunities possible.

Herd health is a top priority here at PSU. Any animals introduced into the program are from herds with similar vaccination and herd health programs and on arrival are quarantined and tested before they enter our herd. We participate and are certified in the Pennsylvania Beef Quality Assurance program and the herd is federally accredited free of Tuberculosis and certified Brucellosis free. In addition, the herd is enrolled in the Pennsylvania Johnes program and is Leucosis free. All cattle offered for sale will be tested and sell BVD PI free. All sale cattle will be current with our herd health vaccination protocol.

Our goal is to reward your trust and confidence in our cattle with a reliable product. We would like to thank all who have purchased or bid on cattle from PSU in the past, we value your relationship and support of our program. If you have any questions about the cattle or the private treaty sale, please call.

Sincerely,

A handwritten signature in blue ink that reads "Wendall Landis".

Wendall Landis  
Beef Cattle Manager  
(814)-280-7611

A handwritten signature in blue ink that reads "Ken Reed II".

Ken Reed  
Asst. Beef Cattle Manager  
(814)-280-7397

# **Penn State University Private Treaty Female Sale**

**Bids close at 3:30pm on October 24, 2009**

## Sale Location

Penn State University Beef Cattle and Sheep Center  
142 Orchard Rd.  
University Park, PA 16802

## Sale Day Phone Lines

Wendall Landis      814-280-7611 cell  
Ken Reed              814-280-7397 cell

## Terms and Conditions

Cattle will sell under standard Terms and Conditions as adopted by the American Angus Association. Cash or check will be accepted. All cattle must be paid for immediately following the sale and before load-out unless prior arrangements have been made.

## Herd Health

The Penn State University herd is federally accredited free of Tuberculosis and Certified Brucellosis free. In addition, the herd is enrolled in the Pennsylvania Johnes program and is Leucosis free. All sale cattle are tested BVD PI free. All cattle will be accompanied by proper health certificates for immediate shipment.

## Sale Bidding

Bidder numbers will be required. Each lot can be claimed at the base price with \$100 bid increments thereafter.

<b>Lot 1</b>	<b>P S Playmate 714 905</b>		<b>Tag: 905</b>	
	<b>Tattoo 905-C09</b>	<b>DOB: 02/03/09</b>	<b>Reg. No. 16411878</b>	
Sire: H S A F Bando 1961 J K S Miss Cheyenne 196 Boyd Beef Maker 3069				
Dam: P S Playmate 402 714 P S Playmate 215 402				
<b>Birth</b>	<b>Wean Adj.</b>	<b>Wean Adj. Ht.</b>	<b>Year Adj. Wt.</b>	<b>Year Adj. Ht.</b>
78				
<b>Ultrasound EPDs</b>				
<b>IMF</b>	<b>REA</b>	<b>Fat</b>	<b>%RP</b>	<b>\$F \$G \$B</b>
				30.15 20.17 47.15
<b>EPD's</b>		<b>Carcass EPD's</b>		
<b>Birth</b>	<b>Weaning</b>	<b>Milk</b>	<b>Year</b>	<b>Scrotal</b>
1+2.2	1+50	1+27	1+91	
<b>Wt</b>	<b>Marb</b>	<b>RibEye</b>	<b>Fat</b>	<b>% Retail</b>
1+20	1+0.42	1+0.05	1+0.03	

<b>Lot 5</b>	<b>P S Blackcap 345 921</b>		<b>Tag: 921</b>	
	<b>Tattoo 921-C09</b>	<b>DOB: 02/21/09</b>	<b>Reg. No. 16410200</b>	
Sire: B/R 65R Genesis B/R Blackcap Empress 127 P S New Design 602 920				
Dam: PS Blackcap 404 345 P S Blackcap 009 404				
<b>Birth</b>	<b>Wean Adj.</b>	<b>Wean Adj. Ht.</b>	<b>Year Adj. Wt.</b>	<b>Year Adj. Ht.</b>
93				
<b>Ultrasound EPDs</b>				
<b>IMF</b>	<b>REA</b>	<b>Fat</b>	<b>%RP</b>	<b>\$F \$G \$B</b>
				22.03 35.88 55.29
<b>EPD's</b>		<b>Carcass EPD's</b>		
<b>Birth</b>	<b>Weaning</b>	<b>Milk</b>	<b>Year</b>	<b>Scrotal</b>
1+1.0	1+43	1+21	1+80	1+0.38
<b>Wt</b>	<b>Marb</b>	<b>RibEye</b>	<b>Fat</b>	<b>% Retail</b>
1+12	1+0.66	1+0.22	1-0.01	

<b>Lot 2</b>	<b>P S Playmate 736 906</b>		<b>Tag: 906</b>	
	<b>Tattoo 906-C09</b>	<b>DOB: 02/05/09</b>	<b>Reg. No.</b>	
Sire: C A Future Direction 5321 BT Crossover 758N BT Royal Pride 237G B C Matrix 4132				
Dam: P S Playmate 024 736 P S Playmate 312 024				
<b>Birth</b>	<b>Wean Adj.</b>	<b>Wean Adj. Ht.</b>	<b>Year Adj. Wt.</b>	<b>Year Adj. Ht.</b>
69				
<b>Ultrasound EPDs</b>				
<b>IMF</b>	<b>REA</b>	<b>Fat</b>	<b>%RP</b>	<b>\$F \$G \$B</b>
				18.53 37.71 16.78 37.00 27.54 66.18
<b>EPD's</b>		<b>Carcass EPD's</b>		
<b>Birth</b>	<b>Weaning</b>	<b>Milk</b>	<b>Year</b>	<b>Scrotal</b>
1+2.2	1+50	1+27	1+91	
<b>Wt</b>	<b>Marb</b>	<b>RibEye</b>	<b>Fat</b>	<b>% Retail</b>
1+20	1+0.42	1+0.05	1+0.03	

<b>Lot 6</b>	<b>P S Burgess J016 924</b>		<b>Tag: 924</b>	
	<b>Tattoo 924-C09</b>	<b>DOB: 02/25/09</b>	<b>Reg. No. 16410201</b>	
Sire: B C Lookout 7024 Gibbet Hill Mignonne E37 TC Stockman 365				
Dam: Summitcrest Burgess J016 Summitcrest Burgess E075				
<b>Birth</b>	<b>Wean Adj.</b>	<b>Wean Adj. Ht.</b>	<b>Year Adj. Wt.</b>	<b>Year Adj. Ht.</b>
100				
<b>Ultrasound EPDs</b>				
<b>IMF</b>	<b>REA</b>	<b>Fat</b>	<b>%RP</b>	<b>\$F \$G \$B</b>
				21.29 23.10 47.68
<b>EPD's</b>		<b>Carcass EPD's</b>		
<b>Birth</b>	<b>Weaning</b>	<b>Milk</b>	<b>Year</b>	<b>Scrotal</b>
1+3.2	1+45	1+17	1+80	1+0.28
<b>Wt</b>	<b>Marb</b>	<b>RibEye</b>	<b>Fat</b>	<b>% Retail</b>
1+19	1+0.20	1+0.49	1-0.01	

<b>Lot 3</b>	<b>P S Lassie 724 912</b>		<b>Tag: 912</b>	
	<b>Tattoo 912-C09</b>	<b>DOB: 02/08/09</b>	<b>Reg. No. 16410197</b>	
Sire: B C Matrix 4132 CAF Pure Pride Ext 99 B/R New Frontier 095				
Dam: P S Lassie 09K 724 South Branch Lassie 09K				
<b>Birth</b>	<b>Wean Adj.</b>	<b>Wean Adj. Ht.</b>	<b>Year Adj. Wt.</b>	<b>Year Adj. Ht.</b>
72				
<b>Ultrasound EPDs</b>				
<b>IMF</b>	<b>REA</b>	<b>Fat</b>	<b>%RP</b>	<b>\$F \$G \$B</b>
				27.72 23.65 41.88
<b>EPD's</b>		<b>Carcass EPD's</b>		
<b>Birth</b>	<b>Weaning</b>	<b>Milk</b>	<b>Year</b>	<b>Scrotal</b>
1+0.9	1+46	1+20	1+87	
<b>Wt</b>	<b>Marb</b>	<b>RibEye</b>	<b>Fat</b>	<b>% Retail</b>
1+9	1+0.29	1+0.23	1+0.01	

<b>Lot 7</b>	<b>P S Blacklass 121 934</b>		<b>Tag: 934</b>	
	<b>Tattoo 934-C09</b>	<b>DOB: 03/17/09</b>	<b>Reg. No. 16410208</b>	
Sire: Duff Standout 785 O C C Lady Blackcap 753L Finks 5522-6148				
Dam: PS Elegant Precision 319 121 G A R Precision 303				
<b>Birth</b>	<b>Wean Adj.</b>	<b>Wean Adj. Ht.</b>	<b>Year Adj. Wt.</b>	<b>Year Adj. Ht.</b>
106				
<b>Ultrasound EPDs</b>				
<b>IMF</b>	<b>REA</b>	<b>Fat</b>	<b>%RP</b>	<b>\$F \$G \$B</b>
				12.11 9.10 34.18 15.78 55.63 36.04
<b>EPD's</b>		<b>Carcass EPD's</b>		
<b>Birth</b>	<b>Weaning</b>	<b>Milk</b>	<b>Year</b>	<b>Scrotal</b>
1+3.2	1+45	1+17	1+80	1+0.28
<b>Wt</b>	<b>Marb</b>	<b>RibEye</b>	<b>Fat</b>	<b>% Retail</b>
1+19	1+0.20	1+0.49	1-0.01	

<b>Lot 4</b>	<b>PS Graceful Traveler 449 917</b>		<b>Tag: 917</b>	
	<b>Tattoo 917-C09</b>	<b>DOB: 02/14/09</b>	<b>Reg. No. 16410199</b>	
Sire: B/R 65R Genesis B/R Blackcap Empress 127 PAA Designer Genes of SBF				
Dam: PS Graceful Traveler 122 449 PS Graceful Traveler 808 122				
<b>Birth</b>	<b>Wean Adj.</b>	<b>Wean Adj. Ht.</b>	<b>Year Adj. Wt.</b>	<b>Year Adj. Ht.</b>
77				
<b>Ultrasound EPDs</b>				
<b>IMF</b>	<b>REA</b>	<b>Fat</b>	<b>%RP</b>	<b>\$F \$G \$B</b>
				20.49 37.23 60.77
<b>EPD's</b>		<b>Carcass EPD's</b>		
<b>Birth</b>	<b>Weaning</b>	<b>Milk</b>	<b>Year</b>	<b>Scrotal</b>
1+2.8	1+42	1+22	1+78	
<b>Wt</b>	<b>Marb</b>	<b>RibEye</b>	<b>Fat</b>	<b>% Retail</b>
1+18	1+0.75	1+0.39	1+0.01	

<b>Lot 8</b>	<b>P S Playmate 042 947</b>		<b>Tag: 947</b>	
	<b>Tattoo 947-C09</b>	<b>DOB: 03/24/09</b>	<b>Reg. No. 16415270</b>	
Sire: DCC New Look 101 O C C Dixie Erica 814G P S Traveler 319 613				
Dam: P S Playmate 207 042 P S Playmate 105 207				
<b>Birth</b>	<b>Wean Adj.</b>	<b>Wean Adj. Ht.</b>	<b>Year Adj. Wt.</b>	<b>Year Adj. Ht.</b>
88				
<b>Ultrasound EPDs</b>				
<b>IMF</b>	<b>REA</b>	<b>Fat</b>	<b>%RP</b>	<b>\$F \$G \$B</b>
				19.60 3.38 19.80
<b>EPD's</b>		<b>Carcass EPD's</b>		
<b>Birth</b>	<b>Weaning</b>	<b>Milk</b>	<b>Year</b>	<b>Scrotal</b>
1+4.2	1+47	1+17	1+79	1-0.06
<b>Wt</b>	<b>Marb</b>	<b>RibEye</b>	<b>Fat</b>	<b>% Retail</b>
1+9	1-0.13	1+0.17	1+0.02	

<b>Lot 9</b>	<b>P S Blackcap 642 954</b>			<b>Tattoo 954-C09 Tag: 954</b>			<b>EPD's Dam Sire</b>				
	<b>DOB: 03/30/09 Reg. No. 16410220</b>			Birth +2.6 +1.4			Wean +39 +45				
	Connally Leadtime			Milk +21 +23			Year +79 +85				
Sire:	Connelly L T 654			Scrotal +0.21			Carcass EPD's				
	Pridean of Conanga 6659			Wt +10 +12			Marb +0.27 +0.05				
	P S Improver 36H 424			RibEye +0.11 +0.12			Fat -0.03 -0.04				
Dam:	P S Blackcap 247 642			% Retail			\$Values				
	P S Blackcap 622 247			\$F 22.56 26.13			\$G 24.44 16.17				
Birth	Wean	Wean	Year	Year							
88	Adj.	Adj. Ht.	Adj. Wt.	Adj. Ht.							
Ultrasound EPDs			\$Values								
IMF	REA	Fat	%RP	\$F	\$G	\$B					
				24.34	20.50	39.55					

EPD's Acc			Carcass EPD's Acc						
Birth	Weaning	Milk	Year	Scrotal	Wt	Marb	RibEye	Fat	% Retail
1+2.0	1+42	1+22	1+82		1+11	1+0.16	1+0.12	1-0.03	

<b>Lot 13</b>	<b>P S Lassie 537 702</b>			<b>Tattoo 702-C07 Tag: 702</b>			<b>EPD's Dam Sire</b>				
	<b>DOB: 01/23/07 Reg. No. 15884691</b>			Birth +1.2 +2.0			Wean +43 +60				
	O C C Emblazon 854E			Milk +18 +22			Year +80 +105				
Sire:	B C Matrix 4132			Scrotal +0.83			Carcass EPD's				
	CAF Pure Pride Ext 99			Wt +12 +11			Marb +0.69 +0.09				
	B/R New Frontier 095			RibEye +0.00 +0.40			Fat +0.03 +0.02				
Dam:	P S Lassie 201 537			% Retail			\$Values				
	South Branch Lassie 201			\$F 22.03 40.48			\$G 29.42 15.31				
Birth	Wean	Wean	Year	Year							
82	Adj.	Adj. Ht.	Adj. Wt.	Adj. Ht.							
Ultrasound EPDs			\$Values								
IMF	REA	Fat	%RP	\$F	\$G	\$B					
				37.08	26.86	51.30					

EPD's Acc			Carcass EPD's Acc						
Birth	Weaning	Milk	Year	Scrotal	Wt	Marb	RibEye	Fat	% Retail
+2.1	+53	+20	+99		+14	+0.55	+0.22	+0.04	

Exposed 6/5-8/24 to P S New Look 042 862. Checked Safe.

<b>Lot 10</b>	<b>P S Playmate 042 965</b>			<b>Tattoo 965-C09 Tag: 965</b>			<b>EPD's Dam Sire</b>				
	<b>DOB: 04/27/09 Reg. No. 16415287</b>			Birth +7.0 +1.3			Wean +49 +44				
	O C C Genesis 872G			Milk +17 +17			Year +91 +67				
Sire:	DCC New Look 101			Scrotal -0.02 -0.10			Carcass EPD's				
	O C C Dixie Erica 814G			Wt +12 +6			Marb +0.01 -0.27				
	P S Traveler 319 613			RibEye -0.02 +0.35			Fat +0.01 +0.02				
Dam:	P S Playmate 207 042			% Retail			\$Values				
	P S Playmate 105 207			\$F 30.54 9.56			\$G 7.36 -1.00				
Birth	Wean	Wean	Year	Year							
100	Adj.	Adj. Ht.	Adj. Wt.	Adj. Ht.							
Ultrasound EPDs			\$Values								
IMF	REA	Fat	%RP	\$F	\$G	\$B					
				19.60	3.38	19.80					

EPD's Acc			Carcass EPD's Acc						
Birth	Weaning	Milk	Year	Scrotal	Wt	Marb	RibEye	Fat	% Retail
1+4.2	1+47	1+17	1+79		1+9	1-0.13	1+0.17	1+0.02	

<b>Lot 14</b>	<b>P S Blackclass 304 651</b>			<b>Tattoo 651-C06 Tag: 651</b>			<b>EPD's Dam Sire</b>				
	<b>DOB: 05/22/06 Reg. No. 15522410</b>			Birth +2.5 +1.5			Wean +39 +41				
	Northern Improvement 4480 GF			Milk +29 +26			Year +84 +74				
Sire:	P S Improver 36H 424			Scrotal +0.01			Carcass EPD's				
	South Branch Princess 36H			Wt +19 +11			Marb +0.61 +0.23				
	Bon View New Design 878			RibEye +0.39 -0.04			Fat +0.01 -0.03				
Dam:	PS Elegant Precision 121 304			% Retail			\$Values				
	PS Elegant Precision 319 121			\$F 27.44 17.07			\$G 33.98 20.99				
Birth	Wean	Wean	Year	Year							
85	Adj.	Adj. Ht.	Adj. Wt.	Adj. Ht.							
Ultrasound EPDs			\$Values								
IMF	REA	Fat	%RP	\$F	\$G	\$B					
				24.34	30.67	55.14					

EPD's Acc			Carcass EPD's Acc						
Birth	Weaning	Milk	Year	Scrotal	Wt	Marb	RibEye	Fat	% Retail
+2.1	+42	+28	+82		+18	+0.51	+0.21	-0.01	

Exposed 6/5-8/24 to P S New Look 042 862. Checked Safe.

<b>Lot 11</b>	<b>P S Clova 762 972</b>			<b>Tattoo 972-C09 Tag: 972</b>			<b>EPD's Dam Sire</b>				
	<b>DOB: 05/04/09 Reg. No. 16410230</b>			Birth -0.4 1+1.5			Wean +50 1+39				
	O C C Emblazon 854E			Milk +25 1+14			Year +86 1+69				
Sire:	BC PS Belle Air 405 742			Scrotal -0.23			Carcass EPD's				
	CAF E Belle 259			Wt +12 -2			Marb +0.26 +0.19				
	P S Lead On 320 504			RibEye +0.29 +0.12			Fat -0.04 +0.01				
Dam:	P S Clova 359 762			% Retail			\$Values				
	P S Clova 01H 359			\$F 25.22 13.15			\$G 26.74 19.71				
Birth	Wean	Wean	Year	Year							
78	Adj.	Adj. Ht.	Adj. Wt.	Adj. Ht.							
Ultrasound EPDs			\$Values								
IMF	REA	Fat	%RP	\$F	\$G	\$B					
				46.94	24.11						

EPD's Acc			Carcass EPD's Acc						
Birth	Weaning	Milk	Year	Scrotal	Wt	Marb	RibEye	Fat	% Retail
1+5	1+0.23	1+0.21	1-0.01						

<b>Lot 17</b>	<b>P S SB Princess 110 564</b>			<b>Tattoo 564-C05 Tag: 564</b>			<b>EPD's Dam Sire</b>				
	<b>DOB: 04/10/05 Reg. No. 15044170</b>			Birth +1.7 +1.4			Wean +41 +45				
	Connally Leadtime			Milk +22 +23			Year +79 +85				
Sire:	Connelly L T 654			Scrotal 1+0.39 +0.21			Carcass EPD's				
	Pridean of Conanga 6659			Wt +12 +12			Marb +0.36 +0.05				
	B/R New Design 036			RibEye +0.09 +0.12			Fat -0.04 -0.04				
Dam:	South Branch Princess 110			% Retail			\$Values				
	South Branch Princess 03F			\$F 21.82 26.13			\$G 28.22 16.17				
Birth	Wean	Wean	Year	Year							
96	Adj.	Adj. Ht.	Adj. Wt.	Adj. Ht.							
Ultrasound EPDs			\$Values								
IMF	REA	Fat	%RP	\$F	\$G	\$B					
				25.91	20.83	42.50					

EPD's Acc			Carcass EPD's Acc						
Birth	Weaning	Milk	Year	Scrotal	Wt	Marb	RibEye	Fat	% Retail
+2.9	+43	+20	+84		+14	+0.13	+0.14	-0.05	

Exposed 6/5-8/24 to P S New Look 210 824. Checked Safe.

<b>Lot 12</b>	<b>P S Princess 318 722</b>			<b>Tattoo 722-C07 Tag: 722</b>			<b>EPD's Dam Sire</b>				
	<b>DOB: 02/17/07 Reg. No. 15884709</b>			Birth +0.4 +5.8			Wean +39 +57				
	O C C Kirby 633K			Milk +19 +19			Year +80 +92				
Sire:	B C Marathon 7022			Scrotal -0.31			Carcass EPD's				
	Gibbet Hill Mignonne E37			Wt +14 +17			Marb +0.18 +0.06				
	Rito 616 of 4B20 6807			RibEye -0.09 +0.44			Fat +0.04 -0.00				
Dam:	P S Princess 911 318			% Retail			\$Values				
	P S Princess 720 911			\$F 23.53 28.45			\$G 9.42 16.14				
Birth	Wean	Wean	Year	Year							
98	Adj.	Adj. Ht.	Adj. Wt.	Adj. Ht.							
Ultrasound EPDs			\$Values								
IMF	REA	Fat	%RP	\$F	\$G	\$B					
				22.47	9.95	31.94					

EPD's Acc			Carcass EPD's Acc						
Birth	Weaning	Milk	Year	Scrotal	Wt	Marb	RibEye	Fat	% Retail
+4.9	+47	+19	+82		+15	+0.05	+0.18	+0.02	

Exposed 6/11-8/24 to BC PS Matrix 385 894. Checked Safe.

<b>Lot 18</b>	<b>P S Playmate 333 510</b>			<b>Tattoo 510-C05 Tag: 510</b>			<b>EPD's Dam Sire</b>				
	<b>DOB: 02/07/05 Reg. No. 15044558</b>			Birth +5.2 +2.3			Wean +34 +64				
	Rito 616 of 4B20 6807			Milk +12 +22			Year +67 +111				
Sire:	Rito 112 of 2536 Rito 616			Scrotal -0.48			Carcass EPD's				
	G A R Precision 2536			Wt +4 +16			Marb +0.27 +0.62				
	White Oak Precise 6002			RibEye +0.14 -0.21			Fat +0.01 -0.00				
Dam:	P S Playmate 024 333			% Retail			\$Values				
	P S Playmate 312 024			\$F 13.09 45.17			\$G 22.51 27.34				
Birth	Wean	Wean	Year	Year							
54	Adj.	Adj. Ht.	Adj. Wt.	Adj. Ht.							
Ultrasound EPDs			\$Values								
IMF	REA	Fat	%RP	\$F	\$G	\$B					
				28.55	29.64	45.35					

EPD's Acc			Carcass EPD's Acc						
Birth	Weaning	Milk	Year	Scrotal	Wt	Marb	RibEye	Fat	% Retail
1+3.8	1+49	1+17	1+89		+6	+0.51	-0.01	-0.00	

Exposed 6/5-8/24 to P S New Look 210 824. Checked Safe.

**Lot 19** **P S Queen 338 259**  
**Tattoo 259-C02 Tag: 259**  
**DOB: 04/20/02 Reg. No. 14204434**  
 B/R New Design 036  
**Sire:** P S Designer 207 923  
 P S Playmate 105 207  
 Rito 1H13 of 5C7 Rito 9J9  
**Dam:** P S Queen 818 338  
 P S Queen 337 818

Birth	Wean Adj.	Wean Adj. Ht.	Year Adj. Wt.	Year Adj. Ht.
98	592	44.8	982	

**Ultrasound EPDs**

IMF	REA	Fat	%RP	\$F	\$G	\$B
				16.29	20.83	39.15

EPD's	Dam	Sire
Birth	+ 4.0	+ 5.0
Wean	+ 28	+ 47
Milk	+ 12	+ 18
Year	+ 50	+ 92
Scrotal	-0.31	+ 0.96

Carcass EPD's	
Wt.	+ 8 + 16
Marb	+ 0.07 + 0.45
RibEye	+ 0.15 + 0.13
Fat	+ 0.01 -0.01
% Retail	

\$Values	
\$F	0.08 32.32
\$G	12.94 28.82
\$B	25.37 53.36

EPD's Acc					Carcass EPD's Acc				
Birth	Weaning	Milk	Year	Scrotal	Wt	Marb	RibEye	Fat	% Retail
+ 5.1	+ 38	+ 12	+ 72	+ 0.25	+ 12	+ 0.24	+ 0.22	+ 0.01	

Exposed 6/11-8/24 to BC PS Matrix 385 894. Checked Safe.

**Lot 20X** **P S Royal Princess 618 913**  
**Tattoo 913-C09 Tag: 913**  
**DOB: 02/08/09 Reg. No. 16410198**  
 B C Marathon 7022  
**Sire:** BC 7022 Raven 7965  
 O C C Blackbird 796F  
 Boyd Beef Maker 3069  
**Dam:** P S Royal Princess 105 618  
 South Branch Princess 105

Birth	Wean Adj.	Wean Adj. Ht.	Year Adj. Wt.	Year Adj. Ht.
92				

**Ultrasound EPDs**

IMF	REA	Fat	%RP	\$F	\$G	\$B
				23.43	26.77	50.16

EPD's	Dam	Sire
Birth	+ 3.8	+ 3.4
Wean	+ 47	+ 46
Milk	+ 28	+ 19
Year	+ 87	+ 78
Scrotal	+ 0.15	-0.70

Carcass EPD's	
Wt.	+ 20 + 14
Marb	+ 0.48 + 0.24
RibEye	+ 0.25 + 0.61
Fat	+ 0.02 + 0.00
% Retail	

\$Values	
\$F	27.34 19.02
\$G	26.92 25.64
\$B	53.15 46.18

EPD's Acc					Carcass EPD's Acc				
Birth	Weaning	Milk	Year	Scrotal	Wt	Marb	RibEye	Fat	% Retail
+ 3.6	+ 47	+ 24	+ 83	+ 0.28	+ 17	+ 0.36	+ 0.43	+ 0.01	

Not Halter Broke