



Animal Sciences

PENN STATE COLLEGE OF AGRICULTURAL SCIENCES

Penn State's Animal Sciences major focuses on basic and applied knowledge of the biological sciences related to domestic animals. You can design an individualized program of study that fits your personal interests and professional goals. If you want to pursue the science or business side of animal management, then the Animal Sciences degree program may have what you're looking for.

PENNSTATE



Visit us on the Web:
animalsciences.psu.edu

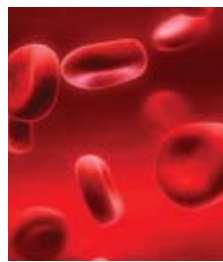
Is the Animal Sciences major at Penn State right for ME?



Animal Sciences

The Department of Dairy and Animal Science and the Department of Poultry Science offer this **interdepartmental program, which has two options.**

Business/Management Option—combine business with the production and management of animals. You can study accounting, marketing, and management in addition to working with animals in real-world situations. **Science Option**—prepare for more in-depth study of the basic sciences relevant to animal biology. **Graduates of this option are well prepared to go on to veterinary school;** graduate study in nutrition, physiology, reproduction, or genetics; or careers in the pharmaceutical or research industries.



The Animal Sciences major gives you more opportunities:

- Choose from several minors that complement the Animal Sciences major, including Agribusiness Management, Biology, Agronomy, Equine Science, Poultry and Avian Science, and Wildlife and Fisheries Science.
- Focus on one species of interest or diversify your studies. Courses are offered in companion animal, beef, dairy, horse, laboratory animal, sheep, swine, and poultry management.
- Work and/or live at one of several animal production and research facilities.
- Join nationally recognized clubs and teams.
- Conduct independent research with leading scientists.

To learn more about Animal Sciences, contact

Jana L. Peters

Department of Dairy and Animal Science
Department of Poultry Science
College of Agricultural Sciences
The Pennsylvania State University
814-863-4198
jpeters@psu.edu

Harold Harpster

Department of Dairy and Animal Science
Department of Poultry Science
College of Agricultural Sciences
The Pennsylvania State University
814-863-0734
hharpster@psu.edu

► Visit animalsciences.psu.edu